

*The future
is in our
hands*

PRESS KIT
-
**WINTER
2023-24**



LA PLAGNE
Paradiski

CONTENTS



3

**IT'S HANDS ON
IN LA PLAGNE!**

New this winter



13

**PUTTING YOUR FINGER
ON THE KEY DATES**

Agenda



5

**HIGH FIVE FOR
THE SLOW LIFE**

Experiences with a low carbon footprint



16

**THE IMPRINT
OF TIME**

A look back at the milestones
that are inspiring the future



8

**KEEPING YOUR HANDS
IN YOUR POCKETS**

Services that make skiing easier



18

**GIVING
PRECONCEIVED
IDEAS THE FLICK**

Go against the clichés



10

**CARDS YOU NEED IN
YOUR HAND TO MAKE
THINGS CHANGE**

The adapting to last



20

**THEY KNOW LA
PLAGNE LIKE THE
BACK OF THEIR HAND**

Contacts



EDITORIAL

60 years ago, men shaped the mountains, creating La Plagne, making it accessible and democratising activities that many people were thrilled to discover for the first time, starting with skiing of course.

Today, faced with our current challenges, it is becoming evident that it is actually the mountains that shape us.

A truly exceptional environment, the mountains stimulate both our sense of humility and our creativity, they encourage us to look at how we do things and to give the best of ourselves for the future generations. For our summer visitors, it is also about learning to slow down and to think differently about travel. As we enter a time of "transition" that is both uncertain and dizzying, it is not easy to take our destiny into our hands. The challenge clearly lies in being able to read the lines of the future.

New this winter

IT'S HANDS ON

in La Plagne

+ EXPERIENCE SLOW IMMERSION AT PLAN BOIS

#timeless #original #basecamp

Combining **several experiences in #slow mode (activities, meals and an original place for the night)**, "Plan Bois Village" has everything in the one place, perched on a "montagnette" (small mountain) in the heart of the La Plagne ski area. What used to be a place to pass through **is now a site where skiers can linger and change their relationship with time** by using it as a basecamp for a day or two and enjoying an original overnight stay.



MORE INFO P. 7



+ SKI AREA LIVE 3000

#chill #panoramic #cocoon



An experience that will get your head in the clouds in summer and winter, 3 000 m above sea level, at the top of the brand new Les Glaciers gondola which will be opening in December 2023.

After a 10 minute ascent, as soon as the cabin opens, skiers and pedestrians will discover an **area that is perfect for a moment of contemplative relaxation**. In the style of a cosy refuge, "Le Sixième Ciel" will propose sweet and savoury snacks to enjoy inside or from a front row seat on the terrace as you make the most of the panoramic view of the Vanoise glaciers.



+ ADDRESS

THE RETURN OF A VILLAGE GROCERY STORE/RESTAURANT

#multi-purpose #convergence #village

In the centre of Longefoy, "L'Autrefoy" is a multi-purpose location that combines a grocery store, a café that opens to an outside area, a wine and spirits cellar with a tasting area and a restaurant-bistrot whose menu includes a homemade menu of bold flavours. This new place for people to get together has brought the village back to life and pays tribute to its history through its respectful, modern and inspired renovation.



MORE INFO P. 11



ANNIVERSARY

PARADISKI IS 20!

#meeting #event #paradiski

In 2003 with the inauguration of the Vanoise Express cable car, Paradiski linked the two sides of the mountain, the resorts of La Plagne, Les Arcs and Peisey-Vallandry, the inhabitants of the valleys and those from around the world. To celebrate its 20th anniversary, in keeping with its DNA, Paradiski will be focusing on surprise and bringing people together.

See you from 16 December 2023 in Paradiski.

+ EXPERIENCE

"JOB SWAP" WITH A BOBSLEIGH PILOT FOR A DAY

#pilot #stunning #immersion

If you would like to follow in the footsteps of the cast from "Cool Runnings", La Plagne's Olympic bobsleigh track is proposing a world exclusive where members of the public can try piloting a bobsleigh. This thrilling and highly original experience lasts a full day for the apprentice pilots. The adventure includes a "track walk", just like the pros when they study the line, two descents per person in a 2-person competition bobsleigh (once as pilot, once as passenger) and a technical and emotional debriefing. You will be supervised by professional pilots, including French bobsleigh federation-certified instructors, both on the track and in a private room with panoramic views where you can stay warm and enjoy lunch.

► This new version for the general public is a variation of the "Bob Incentive" concept created in December 2022 by Carpe Minute agency for company employees. Born of the passionate energy of Quentin Willems, this offer fits perfectly with La Plagne's desire to diversify its business tourism offer. These unique seminar days will run from 16 December 2023 to 31 March 2024.



INFO

- 2 days scheduled during the winter: 12 January and 9 February 2024.
- 8 people maximum per session. Minimum age 16 years. Helmet and crampons provided.
- Price: 590 € / person.
- www.bobsleigh.net



INFO

www.bob-incentive.com





HIGH FIVE

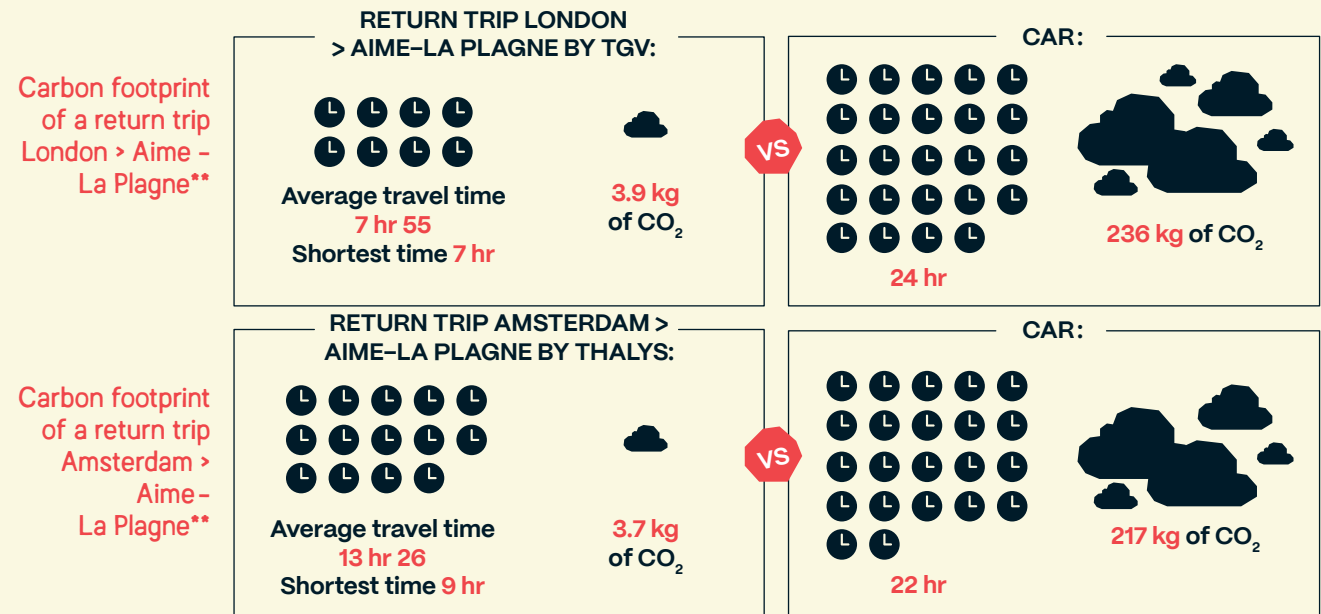
for the slow life

"Going skiing" certainly doesn't mean you can't take a few breaks to slow down the pace and get to know the resort's best unspoilt spots.



+ LEAVING THE CAR BEHIND

With 3 train stations* that serve the resort and a bus network that then takes you to the different villages, it is quite possible to reduce your carbon footprint when you travel to La Plagne.



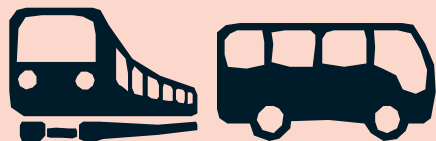
* Moûtiers-Salins-Brides-Les-Bains, Aime - La Plagne and Landry. **Estimations calculated for transport by train, bus and car based on one person and return trip from London and Amsterdam, using the [Avenir Climatique website](#).

**+ PUBLIC TRANSPORT:
YES, YOU CAN TAKE
YOUR SKI EQUIPMENT!**

It is good to know that the SNCF and Altibus (bus link to the resort villages) will take one pair of skis or a snowboard per passenger in addition to your main luggage.

On the Thalys train, "Skihost" staff wearing red jackets can help you get your luggage on and off the train. In addition to the usual luggage racks, there is additional space in two of the carriages. A secure area at the front of the train (not accessible during the journey) is also proposed.

**+ GIVE UP TRAVELLING
TO LA PLAGNE BY AIR**



La Plagne's very own online travel agency, La Plagne Resort, is now only proposing train or bus travel in its all-inclusive packages for long-distance journeys to the resort with the red hat.



INFO

www.laplagneresort.com



**+ DISCREET
SNOWSHOE
HIKES**

Matthieu proposes a very specific outing of at least 2½ hrs on snowshoes in the otherworldly natural setting of the glacial Champagny-le-Haut valley, situated downstream of several thousand-year-old glaciers. **The main aim of the hike may come as a surprise: not to encounter any wild animals!** "If we do see any wildlife, we will have disturbed it" explains Matthieu. From his open-air "office", he witnesses climate change directly. Through his actions and via his organisation, "Phène", **Matthieu has acquired the credentials of a committed "guide-passer"**. During the walks, Matthieu is keen to pass on his love for this Canadian Far North-style environment, and to **raise awareness of the role of the glaciers and the fragility of the mountain ecosystems, while staying off the beaten path.**

Outings combined with a guided tour of the Espace Glacialis, the glacial interpretation centre in the former presbytery in Champagny-le-Haut offer a complete educational and enlightening experience.



INFO

- From 25 € / person / ½ day.
- Private groups possible.
- www.phene-outdoor.fr



**+ EVVO SNOWSHOES
HAVE REVOLUTIONISED
THE TRADITIONAL
SNOWSHOE HIKE**



You don't have to walk duck-footed anymore to avoid tripping over your own feet! The Evvo Snowshoe, a real revolution, will give you back freedom, manoeuvrability and range of movement. **Made 100% in France, its 90% bio-sourced sole** (developed with Michelin) **is compact, ergonomic** and, of course, all-terrain. In fresh snow, you'll feel lighter thanks to the **thermal and acoustic comfort.**

To test them out:

- ▶ **Altitude villages:** at Elpro and Décathlon Mountain
- rental: from 8 € / person for ½ day.
- guided hike from 30 € / 2hr45. Min. age 10 yrs.

What Adrien from Elpro thinks:

"Evvo Snowshoes have rejuvenated the product. They are very easy to use, silent, quick to adjust and can even be used for "snow trail running" when the snow is too deep for running shoes!"



INFO

www.evvo-snow.com/en





**+ SLOW IMMERSION
IN THE "VILLAGE PLAN BOIS"
IN MONTCHAVIN - LES COCHES**



The Village Plan Bois brings together **several #slow mode experiences** in a single location perched on a "montagnette" (small mountain) in the La Plagne ski area. An unspoiled area away from the main resort sites, with trees and a wealth of remarkable environmental features. **What used to be a place to pass through is now a site where you can linger and enjoy a moment out of time, by using it as a base camp for a day or two, with an original overnight stay.** Four of our local socio-professionals, each with a passion for a different but complementary activity and who all enjoy the spirit of the place, came up with the idea of using the surrounding area "with a view to preserving nature and raising awareness of the need to respect the site and its inhabitants". This experimental initiative is also part of La Plagne's Flocon Vert certification process. It is accessible both to skiers and those on foot.

The programme of nature activities is centred around Isabelle Gentil's "cosy cocoon", Le Chalet du Plan Bois, an altitude restaurant that gives pride of place to local products.

- D1 - Sled ride** with Steve Samson's dogs from the Ecrin de Baloo.
 - ▶ **Original overnight accommodation** with Evo2 ski school, led by Bruno Chavard. An overnight stay in an igloo, a wood cabin or even a tent, according to nature's current conditions.
- D2 - Ski-sophrology in the forest** with Karine Fromaget, a ski instructor and sophrologist.



INFO

• <https://evolution2.com/en/la-plagne-montchavin-les-coches>



**+ SKIING WITH
"BUEULE DE BOIS"**

Wooden skis, but not like the ones you use to decorate your chalet! These are highly technical skis, nothing like the old-time "planks", even if they are also made with noble wood and are "lovingly fashioned by hand". The man behind the "Gueule de Bois" brand is 46 year old Manuel Chalopin, originally from Brittany but Savoyard by adoption. Manuel set up his workshop in the old sawmill in Longefoy (Montalbert) to make skis made from local species of wood (maple ash, spruce, poplar and chestnut). He designed two models: the "90" which is perfect for on the piste and the "100", more suited to off-piste. *"I worked as a ski man in a shop for a long time, From having tested the equipment, I know almost every model of every brand, with their good and bad points. With my models, I am looking for perfect skiing sensations; I am also going against the cliché of wooden skis being old-fashioned and very basic!"*. Also a musician who makes stringed instruments, Manuel discovered the pleasure of working with wood when he worked on the construction of log chalets in a previous professional life.



INFO

- 850 € for a pair of skis made entirely by hand.
- www.gueuledebois-planchesetguitares.com



Keeping

YOUR HANDS

in your pockets

Services that make skiing easier

A selection of services
that help you to make
the most of your holiday
and allow you to lighten
the mental load of your
suitcase.



+ A TREAT WITHIN HAND'S REACH

A BEAUFORT CHEESE VENDING MACHINE AT THE STATION

Even if you have left it late to catch your train, there's no excuse not to take some Beaufort cheese back with you! The cooperative dairy in Aime has installed a vending machine just next to the platforms. Accessible 24/24, 7/7.

+ YUGE

Fun and functional, **this is the essential app for making your way round the ski area** and making the most of all its experiences.

YUGE
Paradiski



+ HANDS-FREE KITS FOR LIGHTER LUGGAGE

In theory, a winter sports holiday goes hand in hand with a large suitcase to hold all your skiwear and equipment! However, the load can be lightened by having your luggage delivered (good for your back!) or renting in resort (good for the planet by avoiding over-consumption).

1 SKI SHOP AT HOME

For anyone who doesn't have their own equipment, the ultimate luxury is to have **rental equipment delivered to your resort home**. Forget queuing, the team from Oxygène will bring you the equipment you have pre-ordered online to your accommodation and adjust it for you. They have skis and snowboards for children and adults.



INFO

- From 22.50 € / day for an adult pack (skis, boots and poles).
- www.oxygene.ski



2 CHILDREN'S EQUIPMENT: AN ALI BABA'S CAVE FOR SKI HIRE

The Yapu-k site is bursting with equipment and clothing suitable for mountain life for 0-10 year olds and all available for hire. Apart from the complete online catalogue that offers delivery to the client's accommodation, a selection of useful equipment is also available directly from the Montchavin-Les Coches tourist office, as well as baby bottle warmers, baby baths, folding cots, high chairs and strollers on skis... **A partnership set up under the Famille Plus label.**



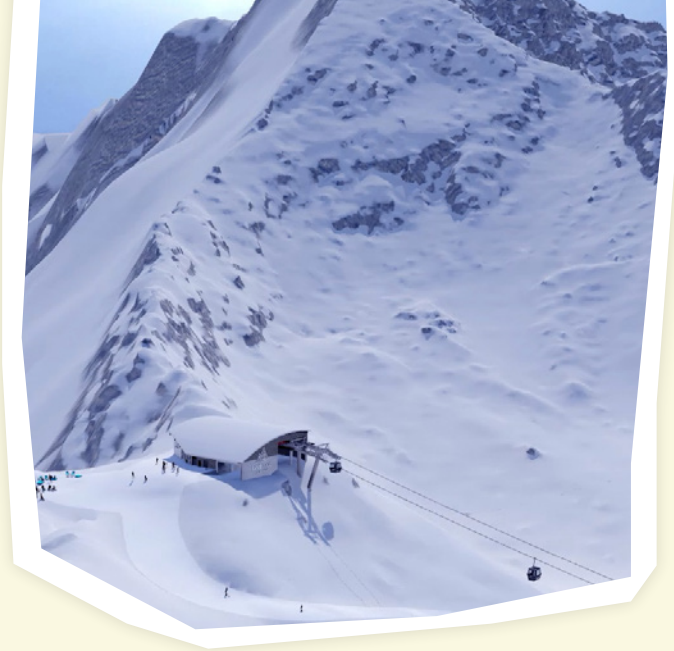
INFO

www.la-plagne.com



THE CARDS YOU NEED IN YOUR HAND

to make things change



Adapting
to last

+ THE START OF A NEW ERA WITH LES GLACIERS GONDOLA



A page was turned at the end of last winter with the dismantling and sale of the Bellecôte gondola cabins, which had reached the age of a well-deserved retirement.

16 December 2023 will mark the launch of the new Les Glaciers gondola. Although its departure point is still the same (Roche de Mio), the line will now follow a new trajectory to arrive on a new sector anchored in the rock, at an altitude of 3 080 m.

Two notable details:

- **La Plagne is the only ski resort in France that installs its own ski lifts**, so this new gondola is the work of SAP Montage, one of the Société d'Aménagement de La Plagne's proud achievements: an in-house team with skills ranging from civil engineering to on-site assembly.
- **Our wish to preserve the mountain environment is reflected in the mitigation hierarchy methodology (Avoid / Reduce / Offset).** "To give a specific example of avoidance, we studied different possible ways of achieving the best summer/winter development with the minimum impact", explains Jacques Chaudan, the SAP's technical director.

IN NUMBERS

10 SEATS
CABINS

CONSTRUCTORS
POMAGALSKI
& INGELO

ALTITUDE
BOTTOM STATION
(ROCHE DE MIO)

2,715
METRES

ALTITUDE
TOP STATION

3,080
METRES

FLOW
2,700
PEOPLE / HOUR

ASCENT
TIME
10 MIN

+ PUTTING A GROCERY BACK IN THE VILLAGE CENTRE

Although it was the place where Beau-
fort cheese was made from 1932 and
into the 60s, **there didn't seem to be a
future for the old fruitière* in Longe-
foy****, with its traditional vaulted ceilings
and stone-lined cellar. Then along came Arnaud and
Marie-Cécile Defayet, a couple with great vision and
communicative enthusiasm: **"The first time I walked in
there, I instantly sensed the soul and full potential of
the place"** remembers Arnaud, originally from Chartres.
On a professional level, if Arnaud is continuing to work
as a therapist, this is a whole new role for Marie-Cécile,
who used to be an assistant at a Parisian architecture
firm.

**Situated in the village centre, "L'Autrefoy" is a
multi-purpose venue featuring:**

- **a grocery shop** selling organic bread and fresh and
regional/local produce, including fruit and vegetables
- **a café** with an outdoor seating area
- **a wine and spirits cellar** with a tasting area
- **a bistro-restaurant** with a 'home-made' menu of bold
flavours (onion tiramisù!)

Because **L'Autrefoy** is not only a meeting point that has
revived village life, but also pays tribute to the history of
Longefoy and its cheese dairy through its **respectful,
modern and inspired renovation**, the project has got
most of the locals on board. The photographs and ob-
jects from yesteryear that have (re)taken their place in
the restaurant have contributed to this: for example, the
old copper cauldron was found after a long search and
brought back from Fréjus to the cheese cellar it was first
used in. On the staircase leading up to the restaurant,
the personalised wallpaper uses period images and the
handwritten notes of the villagers in the dairy register...
creating **a lovely, lively address, where the past, pre-
sent and future of the village are inextricably linked.**

* Traditional mountain dairy where the milk is made into cheese on
site.

** Red-roofed village with a population of 255 inhabitants, 1 250 m
above sea level, just next to Montalbert.



Interview



Visit in
30 seconds



INFO

- **Open year round.**
- **Lunch and dinner menus on
the basis of a selection of fresh
products from 20 €.**
- **Less than 5 min from the slopes.**
- **Free bus service Montalbert <> Longefoy
<> Aime-la-Plagne in winter.**
- **Instagram : lautrefoy**



+ CREATING A REGION-WIDE "EMPLOYER BRAND"



In a sensitive socio-economic climate, it seems obvious
that we should group everyone together "under the
same red hat" to respond effectively to the new chal-
lenges of the job market. **The Office de Tourisme de la
Grande Plagne has therefore created a territory-wide
"resort employer brand" and launched a specific web-
site that shares tools, such as grouping job offers, etc.**
This approach has already brought together around
100 socio-professionals to highlight the resort's key
assets for job applicants. With a view to recruiting and
retaining season workers, this is a "seduction operation"
that will be conducted over the long term, its priority
mission being to fill 3000 jobs every winter season.



INFO

www.emploi-laplagne.com



PUYDUFOU.

Partners for over ten years, La Plagne and Puy
du Fou are now coordinating on-site mee-
tings between employers and job applicants.
**Making the most of their complementary
seasons, the goal is to encourage season
workers to work in both destinations over
the year.** To do this, the Puy du Fou HR team
came to La Plagne in January 2023 and La
Plagne will be going to the Vendée on 14 Sep-
tember 2023. It is a system that already works
very well for a number of season workers from
France and abroad. It is this virtuous circle
that has led to the creation of the La Plagne
employer brand.



+ SECOND HAND: THINGS ARE CHANGING IN THE SHOPS!

I FIND A SECOND-HAND SKI OUTFIT AT ANTROPIA

On your way up to La Plagne, you can stop off at Antropia, the territory's first third place and recycling centre which opened in Aime in the valley in spring 2023.

The principle of a recycling centre is to collect and put back into circulation what people no longer need, an approach that naturally supports the development of the circular economy on a local scale.

In fact, through its network, **Antropia collects a lot of skiwear (jackets, ski pants, etc.), from the different socio-professionals from all of the local resorts in particular.** This ski wear, mostly by brand names and often nearly new, are rendered "neutral" by having any labels or other badges removed by partner association One Tree at a Time.

[\[onetreeatitime.fr\]](http://onetreeatitime.fr)



INFO

- Teen or adult outfits (from size XS, jacket + pants) from 160 €. Children's skiwear also for sale.
- www.antropia-coop.fr



INFO

- Children's skis from 7 € / day from the Ski Hut shop in Plagne Centre.
- www.la-plagne.com



REPAIRING CLOTHING RATHER THAN THROWING IT AWAY

Belle Plagne Sports is one of the five partner shops of Lyon brand Goodloop, specialising in the repair and alteration of technical outdoor wear. The shop sends off the items deposited and after 2 weeks you can head off for new adventures with your item of clothing or equipment.



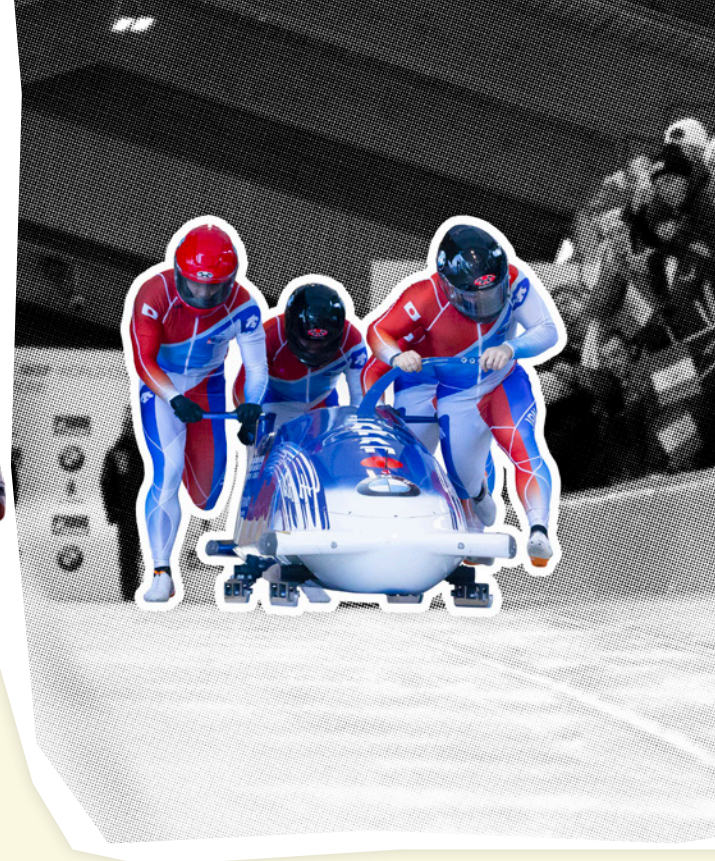
INFO

- www.goodloop.fr/je-choisis-ma-reparation/



PUTTING YOUR FINGER

on the key dates



+ 3 - 10 DECEMBER 2023 BOBSLEIGH AND SKELETON WORLD CUP

La Plagne's Olympic bobsleigh track, considered to be one of the world's most technical tracks, will be the playground for the world's top bobsledders during this event. **Women's team Margot Boch and Carla Sénéchal, the only French bobsleigh team currently competing,** will be playing at home on the 19 bends of La Plagne's ice serpent. To be confirmed: the participation of another two local competitors, Lucas Defayet and Agathe Bessard, who is recovering from an injury during the last world championships.

Programme for the event:

- **3 - 7/12:** training
- **8/12:** men's and women's skeleton
- **9/12:** 2-man bobsleigh and women's monobob
- **10/12:** 4-man bobsleigh and 2-woman bobsleigh

+ IBSF PARA SPORT WORLD CUP 2023/24 18 - 24 MARCH 2024

For the second time, La Plagne will host the Para Bobsleigh World Cup.

"It's a real opportunity to compete in a world cup event at home, on the track where I grew up. I can't wait to share this moment with my family, friends and sponsors. It isn't always easy for them to travel to events, so we have all put this date in our diaries! It is also an opportunity to meet our supporters, to hear them encouraging us at the start and see the tricolour flags waving... That will definitely give us an extra impetus! We know that people will be expecting more from us at this event, especially after finishing 5th in the world championships last season, but we will remain focused on our goal which is to get as close as possible to the podium. I would personally be so proud to be on the podium, it would be an amazing memory to share with my dad and my granddad, who both used to compete in the bobsleigh and who passed their passion for the sport on to me."

Margot Boch, champion, 2-woman bob
Instagram : margotboch

+ FEBRUARY 2024
ROXY RIDE DAYS
BY TESS LEDEUX


For the second year in a row, the 2022 Beijing Olympic freestyle skiing vice-champion is holding an event to bring together the next generation of women's freestyle skiers on the Riders Nation snowpark. A day on her home turf where young riders aged 11 to 16 get to meet, share and compete.

Instagram : [tessledeux](#)



+ 20 & 21 JANUARY 2024
COMBE BÉNITE
SKI TOURING RACE

This competition, which is part of the French Cup for all categories and the French Youth Championships (U18 and U20), will now be held over two days with two events: **a new sprint event in Montalbert and a second individual event in the original spirit of the discipline** on the Versant du Soleil, up above the village of Granier (710 to 1900m elev. gain).

 **INFO**
www.combebenite.fr/ski-alpinisme/les-courses/



+ 26-28 JANUARY 2024
20TH EDITION OF
LA BORZDERETTE

An unusual and unconventional frosty event that brings together some **400 to 500 mountain enthusiasts** of all kinds around the ice tower in Champagny-en-Vanoise. Its now cult motto, "Détendez-vous ça va bien se passer !" (Relax, it's going to be fun!), sets the tone for a festive and highly convivial weekend, with one of the highlights the Saturday during a **wacky multi-activity competition**.

 **INFO**
www.gzd.fr





**+ ANNIVERSARY:
PARADISKI IS
TURNING 20**

Since it was created in 2003, Paradiski has given the lie to the old proverb that says that only mountains can never meet. The inauguration of the Vanoise Express, the exceptional cable-car that links the two mountains, has proven that everything can in fact be connected. This is how Paradiski linked the unexpected by connecting the two mountains, the resorts of La Plagne, Les Arcs and Peisey-Vallandry, the inhabitants of the valleys and those from across the world. This winter, 2023-24, will mark the 20th anniversary of Paradiski.

This anniversary tribute will celebrate the goal of its visionary creators and the loyalty of the 4,3 millions of Paradiskiers, with a programme that focuses on surprise and bringing people together. A new logo will be its first gift.



Liberated from a realistic representation of a snowflake, with a more minimalist line and associated more closely with a pluri-activity mountain in both winter and summer, it evokes outreach, encounters and diversity.

See you on 16 December 2023 in Paradiski

**+ 15-20 APRIL 2024
THE "CHALLENGE DES
MONITEURS"**

For its 72nd edition, this annual competition is coming to La Plagne for the 4th time. The last time it was organised here was in 2003. **A real "ESF ski instructors' French Championship"**, the event includes some 40 races (downhill skiing, cross-country skiing, telemark, ski-cross, snowboard-cross, freestyle skiing and snowboarding and ski touring) with around **2,000 instructors competing**.

 **INFO**
www.esf-uk.co.uk



**+ 6-11 APRIL 2024
SUBLI'CIMES**



The resort's peaks burst into colour and **"oases" spring up in unexpected places**. A little piece of spring madness, Subli'Cimes is an **event for both skiers and non-skiers to enjoy**.

 **INFO**
www.la-plagne.com



THE IMPRINT OF TIME

A look back at the milestones
that are inspiring the future

+
**AUCTIONING OFF THE
102 CABINS FROM
THE GLACIER**

#goldenage #glacier #collector's item

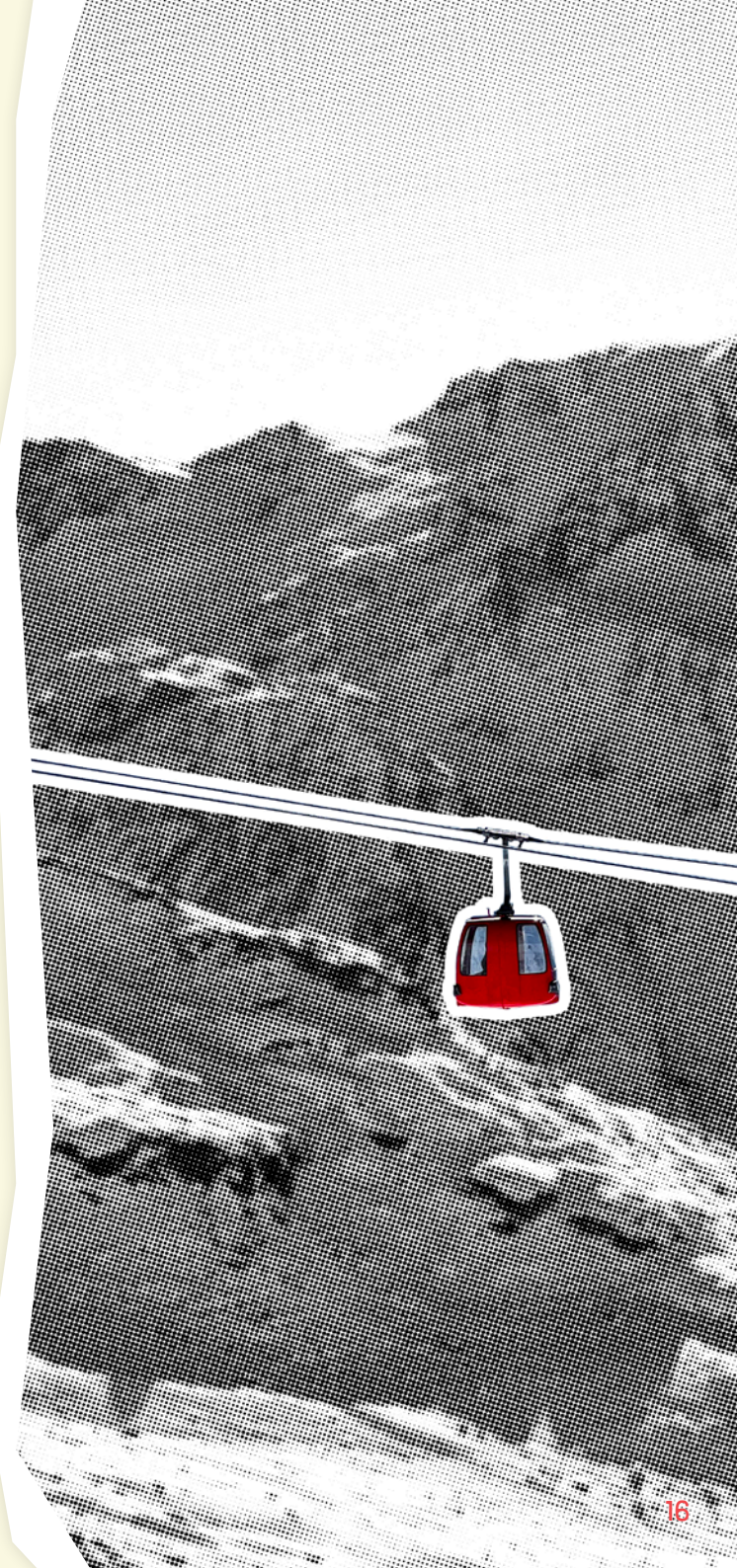
**TURNING
A PAGE**

One and a half hours by the hands of the clock was all it took to sell the 100 cabins from the old Bellecôte gondola. These vintage cabins, dating from 1973-1974, linked the Roche de Mio to the glacier until the end of last season. It was a remarkable sale, always a favourite with enthusiasts and collectors of items from the golden age of iconic winter sports resorts. With a starting price of €500, most of the cabins sold for more than €2,000 each.

The brand new Les Glaciers gondola will take over in December 2023.



[MORE INFO P. 10](#)



TRANSITION

+ THE FIRST "ZERO WASTE ON THE MOUNTAIN" OPERATION

#wastecollection #recycle #nature

On 3 June 2023, five simultaneous waste collections were **organised across the resort. With 350 participants and over a ton of litter collected in 1½ hours**, this federative mobilisation of the local population has proved to be a rich source of information, in particular its characterisation (by weighing and sorting the waste) coordinated by the Mountain Riders association. This is an essential starting point for understanding the origin and type of waste. **The goal is to turn curative actions into preventive actions targeted at the source**, thereby contributing to a virtuous circle to reduce waste in nature as much as possible in the future.

+ "ZERO CARBON MOUNTAIN" AWARD

#carbonfootprint #commitment #floconvert

La Plagne was awarded this trophy in April 2023 at the Alpipro trade show, to reward the resort's commitment to the energy transition. In concrete terms, three actions have been undertaken since 2021: the drafting of a CSR report*, the preparation of a destination carbon footprint and the launch of the process to obtain the Mountain Riders Association's Flocon Vert label.

* Corporate Social Responsibility



Giving preconceiving ideas

THE FLICK

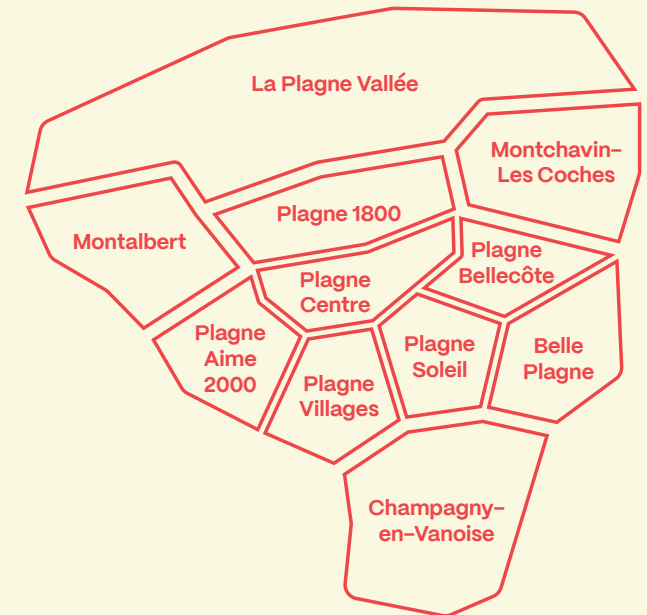
+ LA PLAGNE. MANHATTAN IN THE SNOW?

#architecture #duality #humanscale

To sum up La Plagne in terms of its vertical buildings without mentioning the resort's mid-altitude villages would really be a reductive shortcut that is tantamount to wearing blinkers. It is the characteristic architectural duality along its contours that gives the destination its full identity.

La Plagne is a huge area with 11 sites and just as many personalities:

- **7 set at altitudes of between 1800 and 2050 m that were built from scratch between the 1960s and 1990s.** They are functional first and foremost, tracing the evolution of tourist accommodation in a mountain resort with a clear architectural bias. Amongst the most emblematic are the Aime 2000 building, awarded the "remarkable contemporary architecture" label in 2016, and Plagne Bellecôte, with a silhouette that resembles a dam.
- **4 are "traditional" villages at an altitude of 1250 m, that existed even before the ski area was created.** With their chalets, small residences and farms surrounded by forest and clearings, they can be found at the extremities of La Plagne's ski area, offering a radical change of landscape.



If the resort's total capacity of 56,000 beds can seem daunting at first, it is spread over the sites, with an average of 5,000 in each, to keep a "village atmosphere" on a human scale.

A strong image in favour of vertical architecture is to consider that 56,000 beds in individual houses = 8,800 chalets for 6 people!

+ LA PLAGNE, ALL BOULEVARDS AND FLAT RUNS?

#greatskiing #unspoiled #legendary

Since 60% of La Plagne's runs are greens and blues, mostly on the edges of the sites and villages, the resort is ideal for beginner and intermediate skiers. These wide, gently sloping runs are no stranger to the etymology of the word "Plagne", meaning a flat area or plateau at altitude. It is actually possible to cross the ski area from one end to the other on blue runs and make the most of the CoolSki special offer for beginners.

However, the 53 red and black runs are not just for show on the piste map! Less obvious from the resort's villages, some consider these runs to be "legendary" for their length and/or their interest from a sports point of view. Good examples are Le Mont de la Guerre, a red "Natur" (i.e. ungroomed) run that winds down towards Champagny-en-Vanoise for more than 6 kilometres and 1,100 m vertical drop, in an unspoiled décor with not a single chairlift in sight, or Le Dérochoir black run which offers a real thigh-busting challenge and an amazing panoramic view.

And how can we talk about great skiing without mentioning the off-piste routes, including the famous North Face of Bellecôte or the linked Paradiski area (La Plagne / Les Arcs / Peisey-Vallandry) with its 425 km of pistes?!



INFO

www.la-plagne.com



+ IS SKIING ALL LA PLAGNE IS ABOUT?

#activities #4seasons #nature

The answer was "yes" when the resort initially opened 60 years ago. **Then the summer season and now all four seasons began to play an important role in achieving a total offer of 50 different activities proposed between 650 and 3000 m in altitude.**

Some of these are one-offs, like the **Olympic bobsleigh, luge and skeleton track**, built in 1992, and the **ice climbing tower**, structures that are used by both a sporting élite as well as holidaymakers. The village of Champagny-en-Vanoise has actually been awarded the **"Terre d'Alpinisme" label** as a tribute to its DNA and its involvement in mountain sports.



KEY INFORMATION

www.presse-laplagne.com



They know La Plagne

LIKE THE BACK OF THEIR HAND



**Séverine GONTHIER
& Anne TELLIER**

Your press officers
+33 (0)6 74 23 41 08
press@la-plagne.com

UK press office
Heaven Publicity
Rosie Barcroft & Lindsey Devon
rosie@heavenpublicity.co.uk
www.heavenpublicity.co.uk

Nederlands persbureau
Greenspin
Martine Jongbloed
martine@greenspin.nl
www.greenspin.nl/nl

OUR RIGHT-HAND MAN: THE PRESS ROOM

presse-laplagne.com/en/

A tool especially designed for you. **It works 24/7** and does not require a login or a password. There are:

- **copyright-free images** that are easy to download
- **recent press releases and press kits**
- **detailed themes** to find out even more about the resort.

Download
this presskit



© Photos : Jour Blanc Studio, Louis Garnier, Elisabeth Gayard, OTGP, EVVO, Agence Zoom, Olivier Allamand, Nomad Photographie, Guillaume Petit, Maxime Leclerc, Agence NATIVE, Antropia, Tristan Shu, Elina Sirparanta, SAP
© Illustrations & vidéos : Elisabeth Gayard
Edition produced on recycled paper



OPENING DATES 2023 - 2024

DECEMBER	JANUARY	FEBRUARY	MARCH	APRIL
----------	---------	----------	-------	-------

SKI AREA - ALTITUDE
16/12/2023 to 28/04/2024

SKI AREA - VILLAGES & PARADISKI
16/12/2023 to 21/04/2024

VALLEY & CHAMPAGNY-EN-VANOISE
Open year round

WEBCAM

